

PowerCure™ ASA Amine Synergist

Introduction

PowerCure™ ASA is a polymeric amine synergist. It has low migration and low volatility, which is specifically designed for use in inks. It is particularly suited to use in combination with Type II photoinitiators. PowerCure™ ASA is designed for use in inks requiring low migration and low volatility.

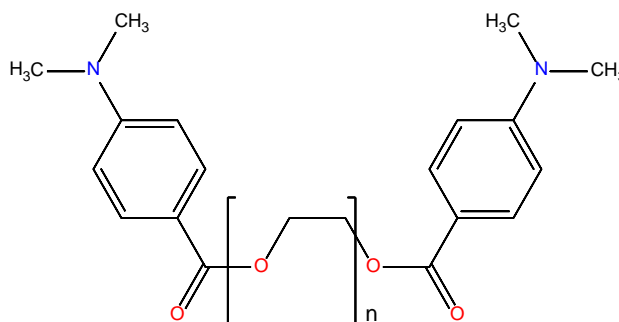
Chemical Name

Poly(ethylene glycol) bis(p-dimethylaminobenzoate)

CAS Number

71512-90-8

Chemical Structure



Physical Properties

Appearance	Yellow-brown viscous liquid
EDB Content (HPLC)	Max.1.00%
Loss on drying (%)	Max.0.10

Benefits & Applications

PowerCure™ ASA has low migration and low volatility. It is especially suitable for black and dark systems.

PowerCure™ ASA is particularly suited to use in combination with Type II photoinitiators. The recommended dosage is 5~15%.

Handling & Storage

In accordance with good industrial practice, handle with care and avoid unnecessary personal contact. Avoid continuous or repetitive breathing of dust. Use only with adequate ventilation. Protect skin. Avoid dust formation and ignition sources.

This product may be stored up to one year in a sealed container. Containers

PowerCure™ ASA Amine Synergist

should be stored in a cool, dry area. Extended storage at elevated temperatures or exposure to direct heat or sunlight could reduce product life. Keep containers sealed when not in use.

For more detailed information please refer to the material safety data sheet.

Packing

PowerCure™ ASA is supplied in 20Kg or 200 Kg Drum.

Note

All information in the leaflet is based on our present knowledge and experience. We reserve the right to make any changes according to technological progress or further developments. Performance of the product described herein should be verified by testing.

We specifically disclaim any other express or implied warranty of fitness for a particular purpose or merchantability.

We disclaim liability for any incidental or consequential damages.